

## Proware Simbolo NAS Plan the Data Storage Environment to Your Enterprise

To satisfy the rapid growth of data storage environment of the enterprise, and solve the management problem of storage equipment for the IT administrator, Proware Technology Corp launch the network attached storage (NAS) embedded with Windows Storage Server 2003 to provide customer with more economic - more stable and better performance storage environment. This total solution includes both hardware and software for customer requirement, which passes the integration test to ensure the availability and reliability. Customer can not only deploy this solution quickly, but also use the Microsoft Storage Server license legally with most economic way. From the management point of view, Proware Windows Storage provides the storage platform includes file service - security control and network operation... and several functions. Further, Proware designs the complete product line of disk array equipment to fulfill all kinds of customer requirement.

### Distributed File System (DFS)

Setup single entry point for file access and provide service of query and physical address mapping. It helps users to access different path of file servers among the enterprise. Benefit of DFS is the integration of path, users do not need to know the physical path of the file, it also provide user with the nearest location to improve network usage.

### Virtual Disk Service (VDS)

Provide standard disk management interface to support different hardware vender. It transfers physical device to logical disk unit so that administrators do not need to learn different commands of venders. When adding a new disk system, VDS can allocate it immediately for users to quick production.



### Proware Technology Corp.

Tel: 886-2-2914-8001 (Rep.) Fax: 886-2-2914-7975  
http://www.proware.com.tw E-mail: info@proware.com.tw



### Volume Shadow Copy Service (VSS)

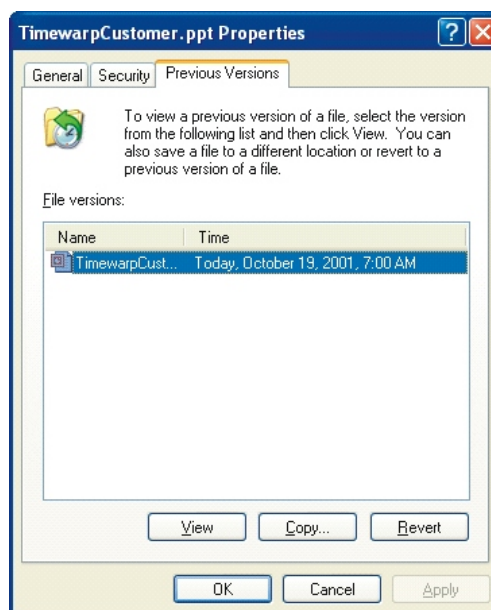
Provide Point-In-Time recover for one or more disk section to enhance the effective of data protection. If there is any open file during the backup procedure, it can continue the operation without close the file. It also provides the function of "Shadow Copies for Shared Folder (SCSF)", to reduce administrator work load. Users can recover the deleted files by themselves.

### Storage Manager (Optional Module)

Customers can purchase storage manager module for storage policy setting. Administrator can set rules of volume storage limitation the file type saving forbidden such as: files with virus and the unnecessary files. It also provides the data storage report so that administrator can query the data storage information.

### iSCSI (Optional modules)

Customers can purchase the iSCSI module for the block-mode transfer for application (such as: SQL/Exchange) via the Ethernet network, they don't need to install the Fibre Channel network. It gets better performance than file transfer mode. It also provides more flexible expansion and management of storage architecture.



Shadow copy for shared folder

# Series Technical Specifications



|  |  |
|--|--|
| <b>Model</b>                           | <b>SN-2123</b>   |
| <b>Architecture</b>                    | 2U Rack Mount  |
| <b>CPU</b>                             | Intel Xeon EM64T 3.0G~3.6G or above, single / Dual Processor   |
| <b>Cache Memory</b>                    | 1GB DDR333/266 registered ECC SDRAM up to 16GB   |
| <b>HDD</b>                             | 12 HDD (Hot-Swap)  |
| <b>HDD Interface</b>                   | SATA II  |
| <b>RAID Levels</b>                     | 0, 1, 0+1, 3, 5, 6 and JBOD  |
| <b>RAID Controller</b>                 | Hardware, Intel 80321 64bits RISC CPU 128 ~ 1024MB cache   |
| <b>SATA Backplane</b>                  | Support  |
| <b>Ethernet Port</b>                   | Supports two Gigabit Ethernet Ports  |
| <b>NIC Function</b>                    | Supports trunking / load balance / fail over   |
| <b>HDD Hot-spare</b>                   | Support  |
| <b>On-line Expansion</b>               | Support  |
| <b>Fibre HBA</b>                       | Optional   |
| <b>SCSI port connect to Tap</b>        | Support  |
| <b>Support HA/cluster</b>              | Optional   |
| <b>Power Supply</b>                    | 600W x 2 (with PFC)  |
| <b>Windows Storage Server Function</b> | DFS(Distribution File System) · FRS(File Replication Service) · VDS(Virtual Disk Service), VSS(shadow copy/snapshot)... etc.               |
| <b>Storage Manager (Optional)</b>      | - Storage Policy : volume storage limitation, quota setting...<br>- File saving type forbidden against the rules.<br>- Data storage report |
| <b>Client Backup</b>                   | proBackup support, task-oriented job to make users manage and track backup/restore activity.   |
| <b>iSCSI(Optional)</b>                 | iSCSI module support, Block mode transfer  |
| <b>3<sup>rd</sup> party software</b>   | Integrated with 3 <sup>rd</sup> party software, such as: backup/restore · HA... etc  |
| <b>Web GUI</b>                         | Chinese / English Browser-based GUI tool   |
| <b>Multi-protocol support</b>          | TCP/IP · SMB · CIFS · NFS · Apple Talk · IPX · NCP · SNMP · FTP · HTTP, Telnet... etc  |

